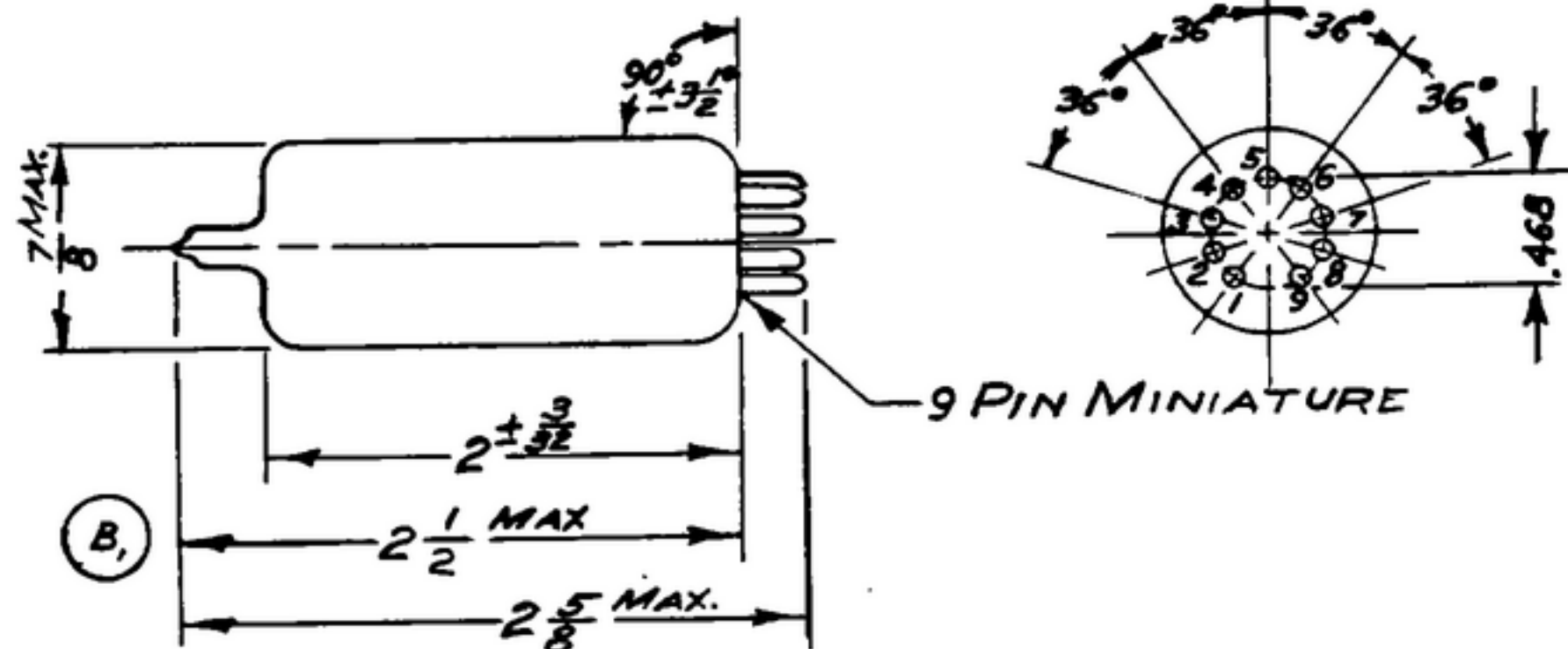


NOTICE: WHEN GOVERNMENT DRAWINGS, SPECIFICATIONS, OR OTHER DATA ARE USED FOR ANY PURPOSE OTHER THAN IN CONNECTION WITH A DEFINITELY RELATED GOVERNMENT PROCUREMENT OPERATION, THE UNITED STATES GOVERNMENT THEREBY INCURS NO RESPONSIBILITY FOR ANY OBLIGATION WHATSOEVER, AND THE FACT THAT THE GOVERNMENT MAY HAVE FORMULATED, FURNISHED, OR IN ANY WAY SUPPLIED THE SAID DRAWINGS, SPECIFICATIONS, OR OTHER DATA IS NOT TO BE REGARDED BY IMPLICATION OR OTHERWISE AS IN ANY MANNER LICENSING THE HOLDER OR ANY OTHER PERSON OR CORPORATION, OR CONVEYING ANY RIGHTS OR PERMISSION TO MANUFACTURE, USE, OR SELL ANY PATENTED INVENTION THAT MAY IN ANY WAY BE RELATED THERETO.

THIS DOCUMENT HAS BEEN PURCHASED BY THE GOVERNMENT AND MAY BE REPRODUCED AND USED IN CONNECTION WITH ANY GOVERNMENT PROCUREMENT OR MAINTENANCE OPERATION.

* FOR INFORMATION ONLY. CONTRACTOR MAY AT HIS OPTION DEVIATE FROM THESE PROCESS DETAILS.

REVISIONS			
SYM	DESCRIPTION	DATE	APPROVAL
* SWE APPROVAL	A, A, - ADDED APPL SM-C-343621	15 OCT 59	42428-PC-59 REVD PME
SYM PR 10042-6	B, (1) 2 1/2 MAX WAS 2 3/8 MAX.	30 NOV 60	42428-PC-59 REVD PME



NOTES:
1. PART MAY BE TYPE 3TF7, AS SUPPLIED BY AMPERITE CO., NEW YORK, N.Y., OR EQUAL, PROVIDING IT MEETS THE FOLLOWING REQUIREMENTS AND DIMENSIONS SHOWN.

DESCRIPTION: AUTOMATIC CURRENT REGULATING BALLAST TUBE.

BULB: STANDARD T-6-1/2

BASE: 9 PIN NOVAL WIRING, PINS 2 AND 7.

MAXIMUM DISSIPATION: 5 WATTS

ELECTRICAL CHARACTERISTICS: WITH A VOLTAGE INCREASE ACROSS THE BALLAST TUBE FROM A THRESHOLD VOLTAGE OF 8.6 VOLTS TO A VALUE OF 16.2 VOLTS, THE CURRENT THRU THE TUBE SHALL BE .310 AMPS ± .020 AMPERES.

AMBIENT TEMPERATURE: -40°C TO +85°C. IN GENERAL THE CURRENT RATING SHALL NOT VARY MORE THAN 5% OVER THE AMBIENT TEMPERATURE RANGE.

MECHANICAL VIBRATION: UNIT SHALL WITHSTAND VIBRATION OF 0.030" AMPLITUDE (0.060 TOTAL EXCURSION) OVER A FREQUENCY RANGE OF 10 TO 55 CPS FOR A PERIOD OF 30 MINUTES IN EACH OF 3 MUTUALLY PERPENDICULAR PLANES WITHOUT BEING RENDERED INOPERABLE.

INTENDED USE: THIS BALLAST TUBE IS INTENDED FOR USE IN A FILAMENT CIRCUITS WHERE THE INPUT LINE VOLTAGE VARIES FROM 21.0 TO 29.0 VOLTS AND THE REQUIRED VOLTAGE ACROSS THE FILAMENT CIRCUIT IS APPROXIMATELY 13 VOLTS.

* WHEN PART NO. APPEARS AS 559 0374 9-2, MILITARY SOURCE INSPECTION IS REQUIRED.

COLLINE PART NO.	ITEM	REQD	PART NO.	DESCRIPTION	MATL	MATL SPEC
LIST OF MATERIAL						
COLLINE PART NO. <i>559 0374 002</i>						

DRAWN <i>Harmer</i>				CHECKED <i>[Signature]</i>		APPROVED		COLLINE RADIO CO. -CEDAR RAPIDS, IOWA- <i>14214-PH-51-93</i>		DEPARTMENT OF THE ARMY SIGNAL CORPS ENGINEERING LABORATORIES FORT MONMOUTH NEW JERSEY <i>SM-B-283222</i>	
UNLESS OTHERWISE SPECIFIED: DECIMAL DIMENSIONS INCLUDING HOLE SIZES MAY VARY ±.005 FRACTIONAL DIMENSIONS INCLUDING HOLE SIZES MAY VARY ±1/64 MACHINED ANGLES MAY VARY ±.1° SHEARED ANGLES MAY VARY ±.25° BROKEN ANGLES MAY VARY ±.1° ECCENTRICITY BETWEEN ANY DIAMETERS ON THE SAME CENTERLINE SHALL NOT EXCEED .010 TOTAL INDICATOR READING. ALL DIMENSIONS ARE FINISH DIMENSIONS INCLUDING APPLIED FINISH AND ARE GIVEN IN INCHES.				SIGNAL CORPS		REVIEWED <i>PME</i>		TUBE-BALLAST DATE <i>19 JAN 56</i> SCALE <i>1/1</i>			
559-0365-003-1 SM-C-249015 SC-DL-248775				APPROVED <i>HLV</i>		APPROVED <i>PME</i>					
APPLICATION				NEXT ASSY		USED ON					